

67-07-04

SERVICE



LETTER

Service Letter No. 462

December 9, 1965

TO: Distributors, Dealers, Certified Service Centers
and Owners

SUBJECT: Inspection of Engine Mount Tubes

MODELS AFFECTED: PA-23-250 Aztecs, Serials 27-2505 to 27-2922 inclusive

COMPLIANCE DATE: Prior to but not later than next 50 hours of operation

A number of reports have been received indicating that cracks have been observed in the engine mount tubes of the subject aircraft. These cracks have been noted in aircraft with 200 hours or more total operating time and in most instances have occurred in commuter air service where frequency of engine starts are at an unusually high level due to short flights and heavy daily schedules.

It is requested that the engine mount tubes of the aircraft indicated by the above serial numbers be inspected for cracks. The sketch on the reverse side of this Service Letter indicates points where cracks have been more commonly observed.

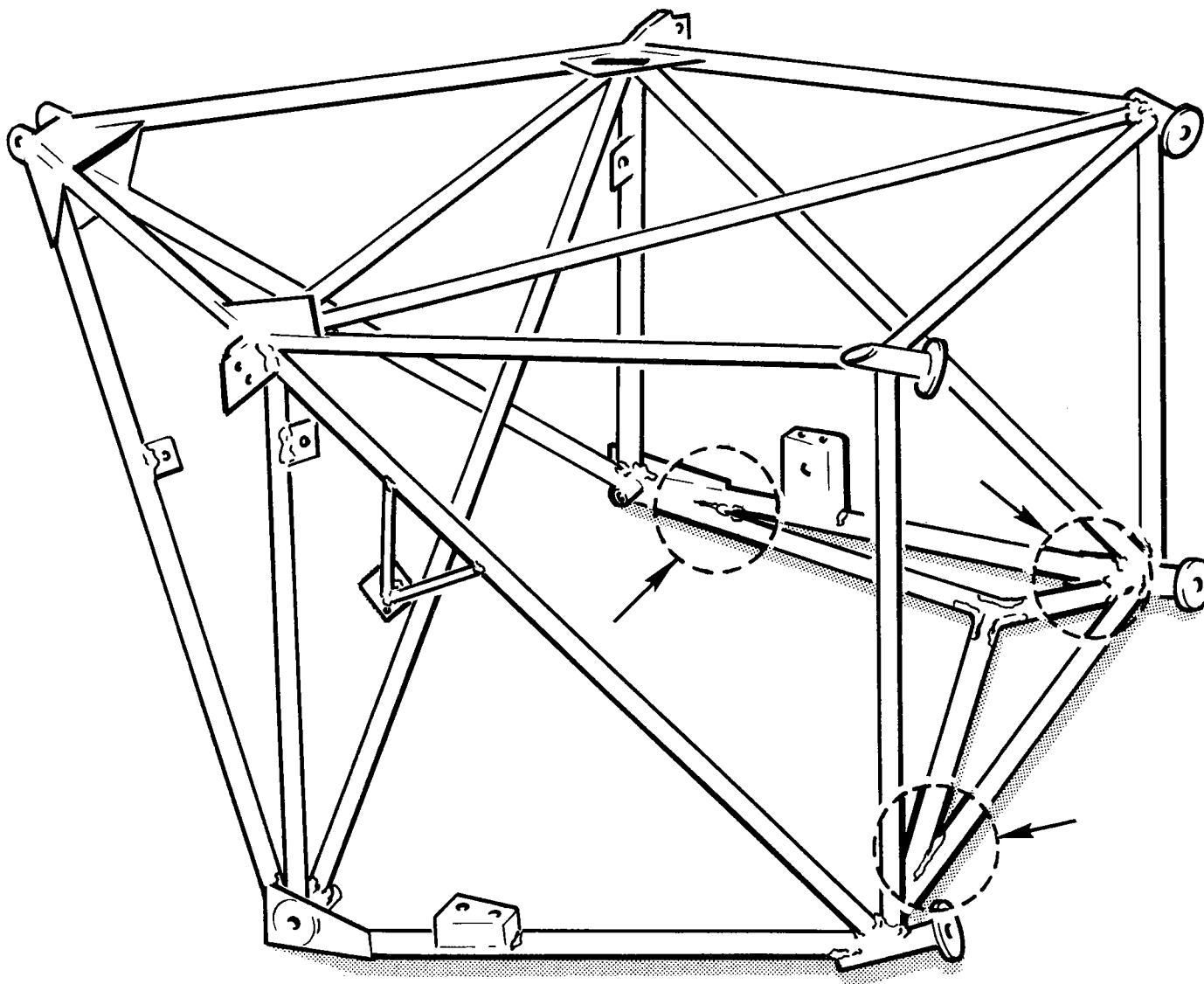
Engine mounts, part numbers 31215-00 and 31215-01, with cracked tubes must be replaced. Replacement mounts will be provided in accordance with the following schedule:

<u>Time on Airplane</u>	<u>Factory Responsibility</u>
Less than 300 hours or 9 months	100%
Between 300 and 400 hours or 9 and 12 months	75%
Between 400 and 500 hours or 12 and 18 months	50%
Between 500 and 600 hours or 18 and 24 months	25%
Over 600 hours or 24 months	0%

(Over)

PIPER AIRCRAFT CORPORATION, LOCK HAVEN, PA.





SERVICE LETTER
No. 462